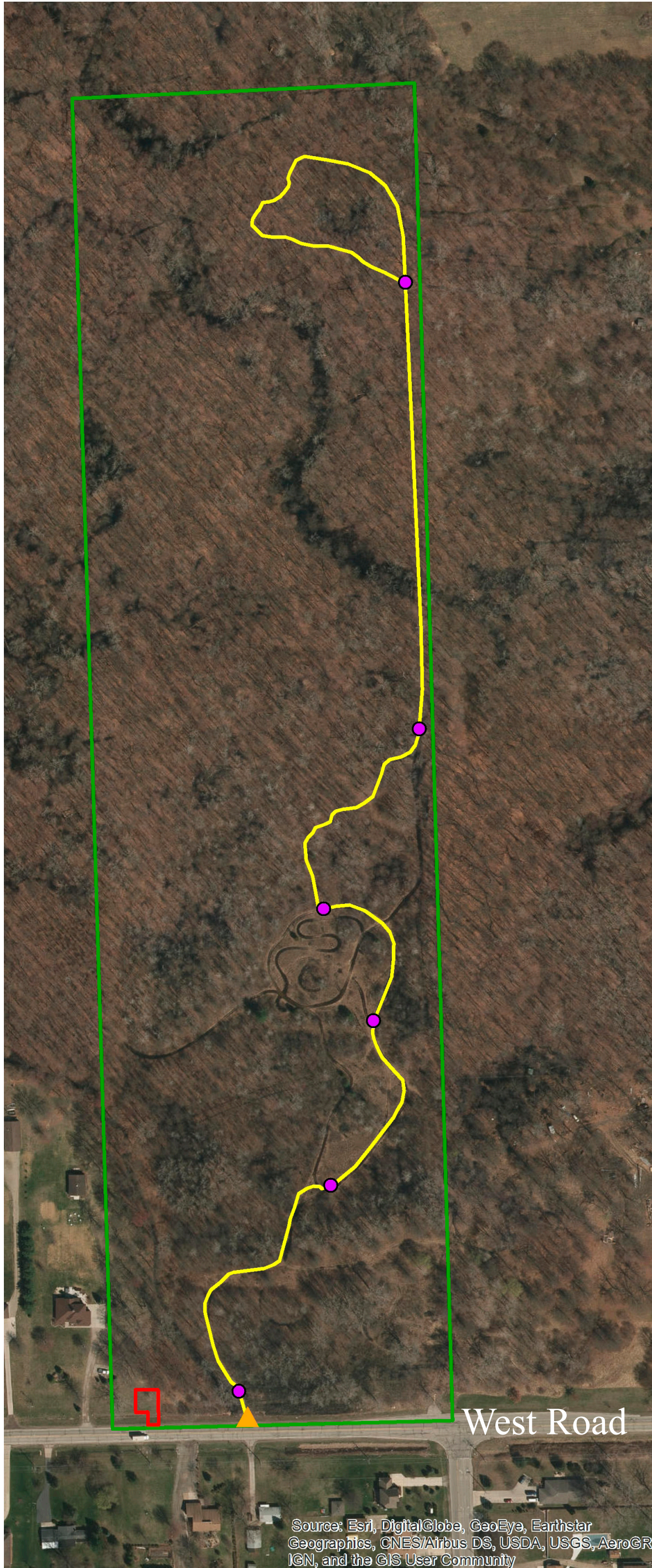




# Southeast Michigan Land Conservancy

## Sibley Prairie Nature Preserve - West Prairie

# TRAIL MAP

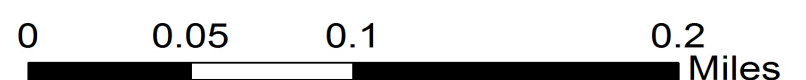
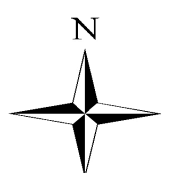


### The Preserve Loop Trail

The trail system is approximately **1.25 miles** in total length. The trail begins in a prairie restoration area where over 15 acres of shrubs and trees were removed in 2015 to improve the globally rare Lakeplain Wet Prairie. SMLC manages this prairie using best practices that include prescribed burning and other invasive species control methods. The prairie gives you a glimpse of what southeast Michigan looked like over 200 years ago. As the trail meanders north, it transitions into a beautiful mesic hardwood forest where it loops around and returns along the same route through the prairie.

**Legend**

- Trail Markers
- ▲ Trail Entrance
- Trail
- Parking
- Preserve Boundary



Source: Esri, DigitalGlobe, GeoEye, Earthstar Geographics, CNES/Airbus DS, USDA, USGS, AeroGRID, IGN, and the GIS User Community